

Palm™ OS 4.0
Series m505, m500, m125
Express Network




Setting Up a Modem Definition for Your Phone
&
Network Connection for Verizon Express Networksm

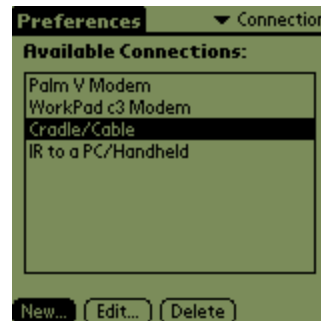
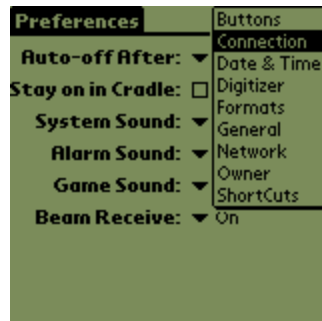
Before setting up the Palm device, verify the data setting on your Express Network compatible phone is set to **115,200 bps** or **230,400 bps** if available (*the speed setting on both the phone and the Palm device must match*).

Modem Definition

1. Go to the “**System**” window (drop down list upper right)

2. From your application launcher tap the  Prefs icon.

3. From the drop down list (upper right), select “**Connection**”. In the Connection window select “**New**” at the bottom.

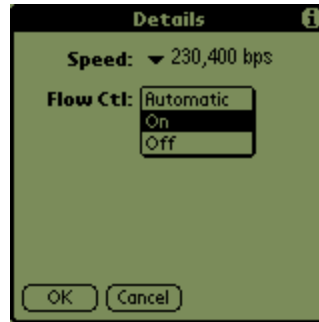
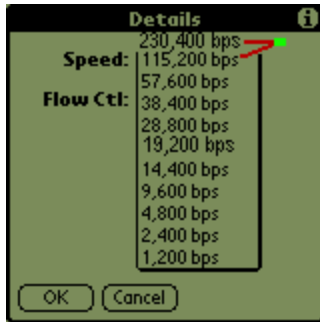


4. Name the connection “**Express Network**”, Connect to: **PC** Via: **Cradle/Cable**
Select “**Details...**”



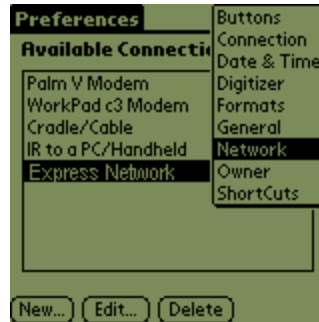
5. Verify these settings **Speed:** "115,200 bps" or "230,400 bps" (if available) and **Flow Ctl:** "On"
(remember the speed setting on both the Palm and the phone must match)


Tap "OK" twice



Network Configuration

6. From the drop down list (upper right), select "Network".



7. Create a new service by tapping the **MENU** icon (lower left corner of the graffiti area) , then select "New" from the drop down list.



8. Enter "Express Network" for the Service name

User Name: **MIN@vzw3g.com**

Password: **vzw** (Tap the "-Prompt-" box and enter "vzw" for the password
if you wish to save it and not enter it before each connection)

Make sure that the User Name and Password are in lower case letter and all without quotes.

Tap "OK" (the Password field should no longer read -Prompt-, it should now read -Assigned-)

Connection: **Express Network** (this is the Modem definition setup in the connection tab)



9. Tap "Details" then "Script"



10. Enter the Parameters below:

Tap "End" and select **"Send:"** / enter **"AT\$QCMR=3"**

Tap **End** and select **"Send CR:"**

Tap **End** and select **"Send:"** / enter **"ATDT#777"**

Tap **End** and select **"Send CR:"**

Tap **End** and select **"Delay:"** / enter **"CONNECT"**

Leave **"End"** as the last parameter



11. Tap **OK** twice

Congratulations! Your Express Networksm connection has been successfully set up. This connection will allow you to connect to the Internet in 6-10 seconds without the need for an Internet Service Provider (ISP) account.

Press **"Connect"** to initiate your **Express Networksm** connection.



Connecting and Disconnecting

Most applications will call your connection automatically when needed, if not, you can connect by tapping on the "Prefs" icon, select "Network" from the master drop down list, select your connection and tap on "Connect". To disconnect, repeat the same steps - "Prefs", "Network", tap "Disconnect" or check and see if there is a disconnect option in the menu of the program you are using.

If the phone fails to disconnect you can press the "End" key to end the call. You should always disconnect on your Palm™ first to ensure the Palm™ application terminates correctly and to ensure your phone doesn't automatically initiate another call if it senses the Palm™ is still trying to send information.