

# Palm OS 3.5

## Express Network Set-up


### Connecting Your Phone To Your Palm™ Device

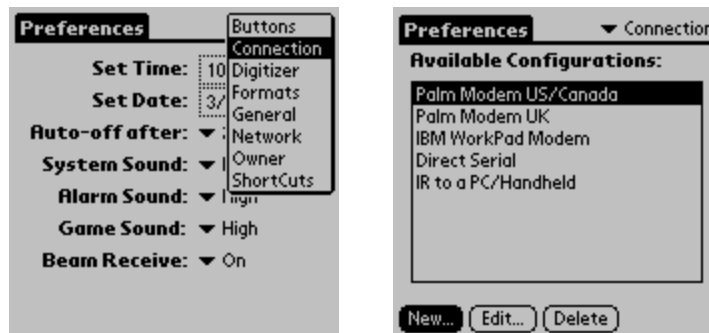
One option is to use a male to male 9 pin null modem adapter to connect your sync cradle or sync cable to the phone's serial data cable (that is usually used with a notebook computer). The adapters are included in the Mobile Office kit. If you did not purchase the kit these adapters may be found at retail electronic outlets.

**Before setting up the Palm device, verify the data setting on your Express Network compatible phone is set to 115,200 bps (this value must match on both the phone and the Palm device).**

### Setting Up a Modem Definition for Your Phone and a Network Definition for Verizon Express Network<sup>sm</sup> Connection

## Configure Modem Definition

1. From your application launcher tap the  Prefs icon.
2. From the drop down list select **Connection**, then select **New**.

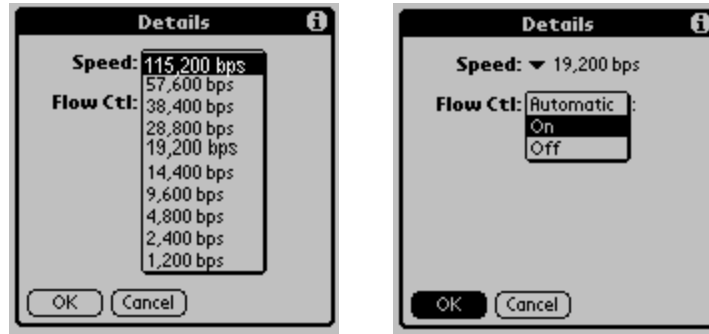


3. Rename the modem definition "**Express Network**" and select "**Serial to PC**" for the Connection Method.

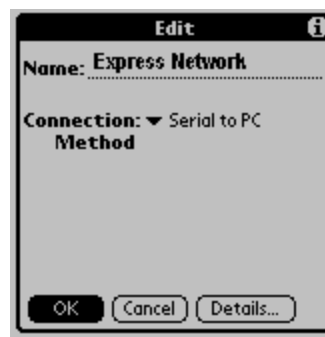
Tap **Details**.



4. Tap on **Speed** and select "115,200 bps", tap **Flow Ctl** and select "On", then tap "OK".



5. Tap "OK"

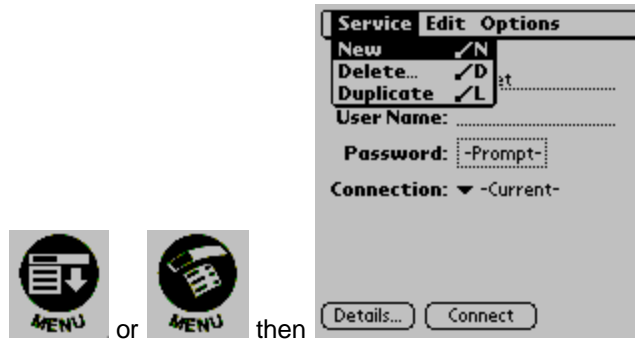


## Configure Express Network Connection

6. From the master drop down list, select "Network".



7. Create a new service by tapping the **MENU icon**, in the lower left corner of the graffiti area, then **select "New"** from the drop down list.

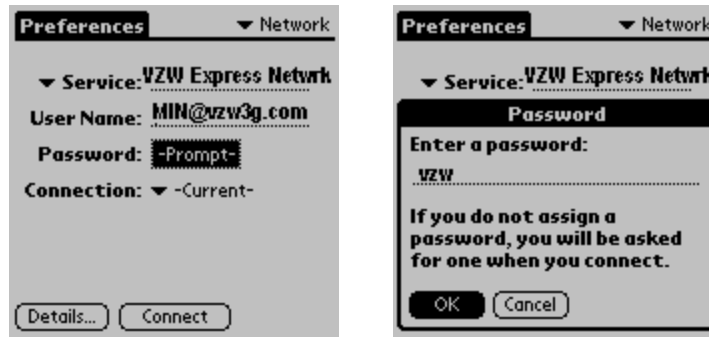


8. Enter "**VZW Express Network**" for the Service name

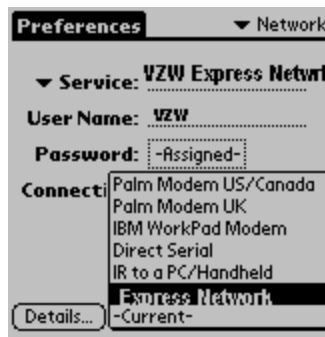
Enter the username **(MIN@vzw3g.com)**

Tap "**-Prompt-**" then enter "**vzw**" for the password (without quotes).

*Make sure that the password is in lower case and tap "OK"*



9. Select "**Express Network**" for the connection (this is the modem definition we configured in the connection tab)



10. Press "**Details**", then press "**Script**"



11. Enter the parameters below:

Tap "End" and select **"Send:" / enter "AT\$QCMR=3"**

Tap End and select **"Send CR:"**

Tap End and select **"Send:" / enter "ATDT#777"**

Tap End and select **"Send CR:"**

Tap End and select **"Delay:" / enter "CONNECT"**

Leave "End" as the last parameter



12. Tap **OK twice**

**Congratulations!** Your Express Network <sup>sm</sup> Dial Up connection has been successfully set up. This connection will allow you to connect to the Internet in less than 10 seconds without the need for an account from an Internet Service Provider.

### Connecting and Disconnecting

Most applications will call your connection automatically when needed, if not, you can connect by tapping on the "Prefs" icon, select "Network" from the master drop down list, select your connection and tap on "Connect". To disconnect, repeat the same steps - "Prefs", "Network", tap "Disconnect" or check and see if there is a disconnect option in the menu of the program you are using.

If the phone fails to disconnect you can press the "End" key to end the call. You should always disconnect on your Palm™ first to ensure the Palm™ application terminates correctly and to ensure your phone doesn't automatically initiate another call if it senses the Palm™ is still trying to send information.