



Windows XP Mobile Office Setup

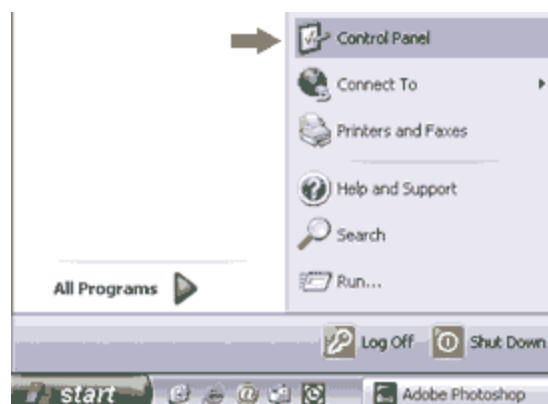


Overview: Windows XP has two views for Control Panel. One view is **Category View**, which I have the setup for in this page. The other view is the **Classic View**, which is Windows 2000 look for control panel. If the customer has **Classic View** enabled already go ahead and use the [Windows 2000 Setup](#) (in order to read Windows 2000 Setup you would need [Acrobat Reader](#)).

Dial-Up Networking Setup

Adding a Standard 19200 modem

Step 1) Click on **Start** and then **Control Panel**.



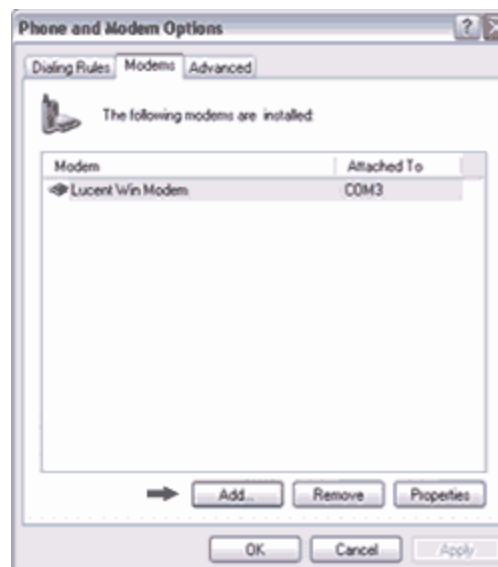
Step 2) From Control Panel under **Pick a category** go ahead and double left-click on **Printers and Other Hardware**.



Step 3) Under **Pick a Control Panel Icon** double left-click on **Phone and Modem Options** to add a standard 19200bps modem.



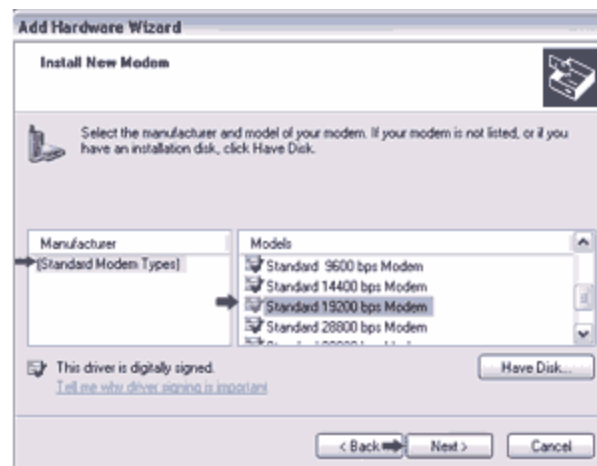
Step 4) Click on the **Modems** Tab (Next to dialing rules Tab) and then click on **Add**.



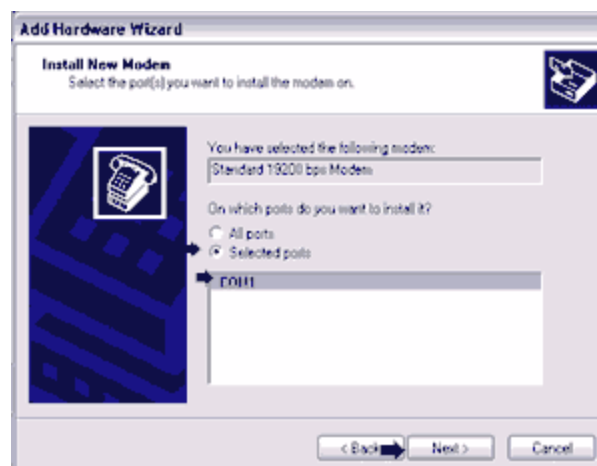
Step 5) You will see the **Add Hardware Wizard**, check the box **Don't Detect the Modem, I will select it from a list** and then click **Next**.



Step 6) For the **Manufacturer** go ahead and select (**Standard Modem Types**) and for the models go ahead scroll down and select **Standard 19200 bps Modem**, now click **Next**.



Step 7) Now the Wizard will ask you to select the port(s) you want to install the modem on. Select **Selected Ports** and then select **COM 1** or any other serial port you have the phone connected (COM 2, KeySpan on COM 1, Belkin on COM 1, etc.), and click **Next**.



Step 8) Congratulations! You have setup a Standard 19200 bps modem. Go ahead and click on **Finish**.



[Continue to Dial-Up Networking Setup](#)