

Palm™ OS 4.0 Series m505, m500, m125



Setting Up a Modem Definition for Your Phone

&

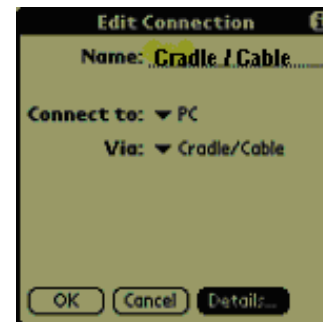
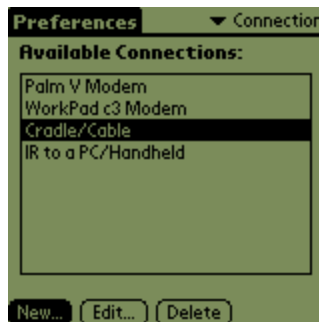
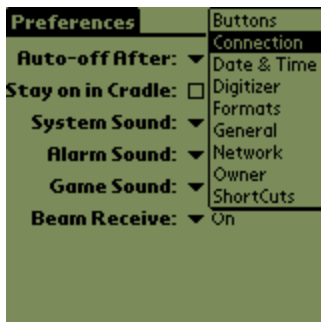
Network Definition for Verizon Quick 2 NetSM Connection

1. Go to the “**System**” window (drop down list upper right)

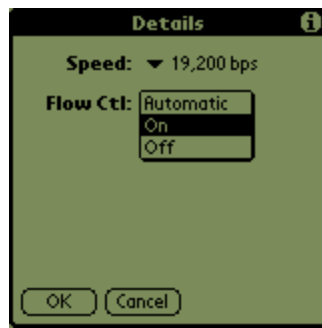
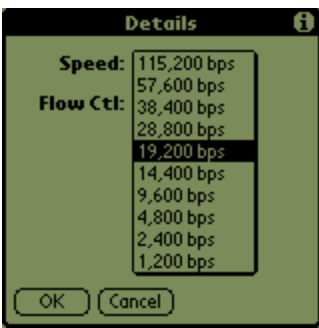
2. From your application launcher tap the  Prefs icon.

3. From the drop down list (upper right), select “**Connection**”. In the Connection window select “**Cradle/Cable**”.

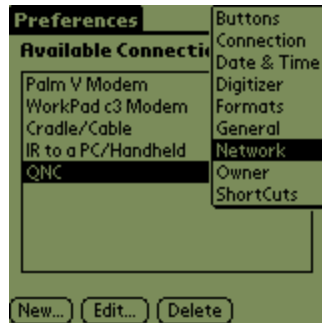
Select “**Edit...**” for Cradle/Cable modem properties, then select “**Details...**”




4. Verify these settings **Speed: "19,200 bps"** and **Flow Ctl: "On"**, then tap "OK" (twice)



5. From the drop down list (upper right), select **"Network"**.



6. Create a new service by tapping the **MENU** icon (lower left corner of the graffiti area) , then select **"New"** from the drop down list.

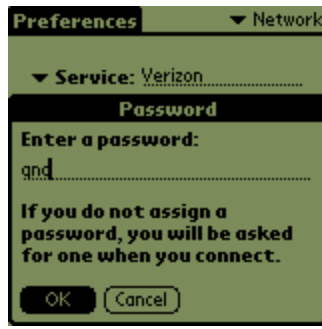


7. For **QNC** enter **"Verizon"** for the Service name, (For an **ISP** enter the ISP specific information in the corresponding fields) **"qnc"** for the "User Name"

Tap the **"-Prompt-"** box and enter **"qnc"** for the password if you wish to save it and not enter it before each connection

Make sure that the User Name and Password are in lower case letter and all without quotes.

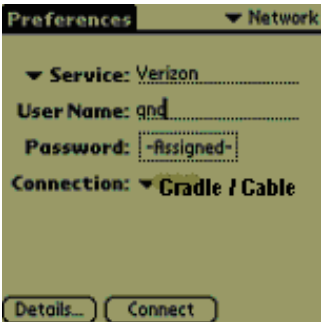
Tap **"OK"** (the Password field should no longer read **-Prompt-**, it should now read **-Assigned-**)



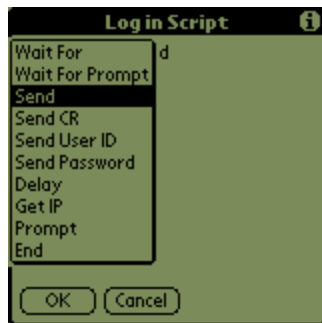
8. For **QNC** select "**Cradle/Cable**" for the Connection:, (For an **ISP** select "**Serial to Phone**" for the Connection: and enter the 10 digit ISP access number in the Phone: area



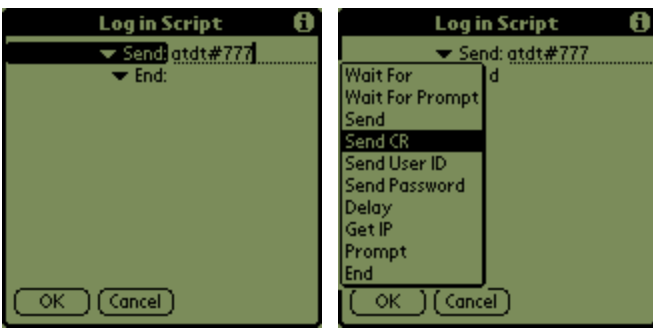
9. Tap "**Details**" then "**Script**"



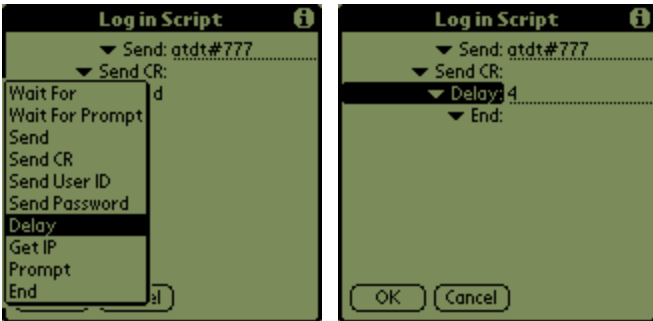
10. Tap on "End", select "**Send**"



11. Enter "**atdt#777**", tap on "End" again, select "**Send CR**"

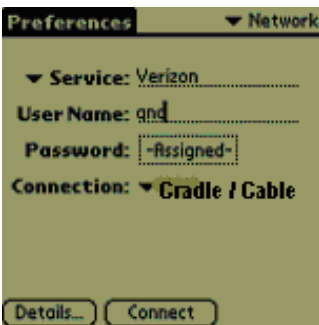


12. Tap on "End" again and select "**Delay**",
 enter the number "4" and tap "**OK**" twice.



Congratulations! Your Quick 2 Netsm Dial Up connection has been successfully set up. This connection will allow you to connect to the Internet in 6-10 seconds without the need for an account with an Internet Service Provider.

Press "**Connect**" to initiate your Quick 2 Netsm Connection.



Dial-Up Access Connections (ISP or Corporate Network)

If you were setting up a network definition to call into your **Corporate Network** or an **Internet Service Provider (ISP)**, **you would set the connection up in the same manner, however you would use the Connection: definition as "Serial to Phone" and enter the 10 digit access number in the "Phone:" field.** Your User Name, Password, Phone Number and settings (if needed) would have to be provided by your network administrator or your ISP. Also the script can be modified if necessary but additional commands, beyond what we used for our Quick 2 Netsm Connection are only needed if a script is normally required to connect to your desired service.