




Windows Pocket PC 2002

What You Need To Get Started

1. Verizon Wireless Mobile Office Kit; which contains a serial data cable for your mobile phone and a PDA adapter
2. Serial Data Cable, Serial Cradle or Universal AutoSync Cable for your Windows Pocket PC Device
3. Your Internet Service Provider's (ISP) settings. If you do not know this information, please check this ISP

Settings FAQ at <http://www.cewindows.net/wce/isp.htm>

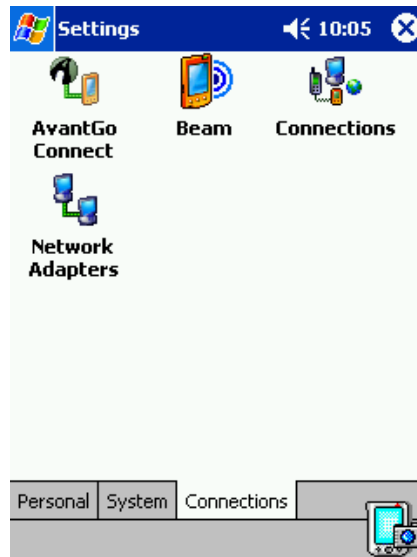
Configure for QNC & Dial-up Connection

Tap Windows **Start**  **Start** (icon in upper left)

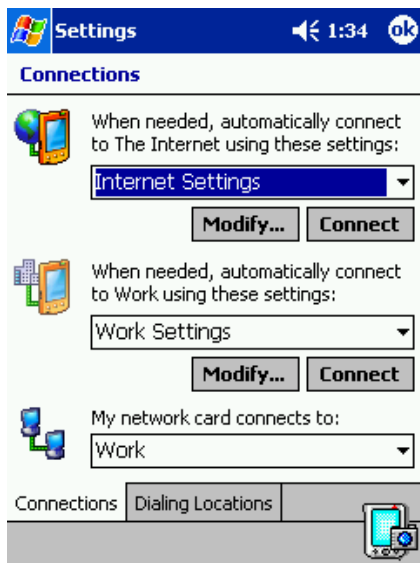
Select **"Settings"**

Select the **"Connections"** tab (bottom)

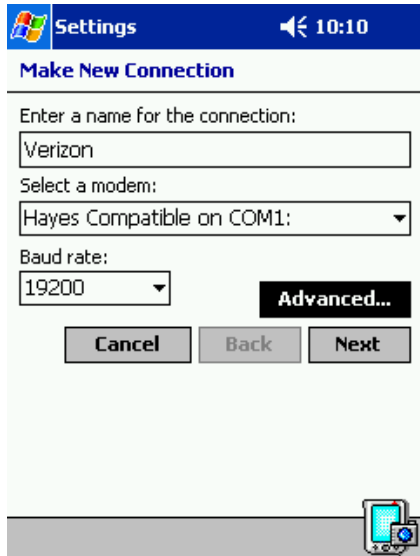
Tap the **Connections** icon



Select **"Modify..."** under **Internet Settings** and select **"New"** to create a new connection

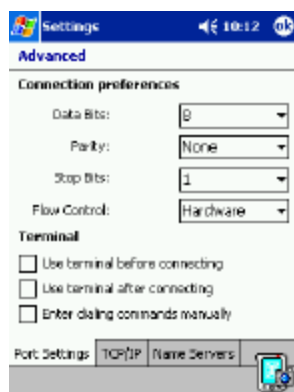


Connection Name: "Verizon" or "Your Existing ISP"
Select a Modem: "Hayes Compatible on COM1:"
Set Baud Rate: "19200"



If you need to change certain special settings, click on Advanced. Most users will not need to change these settings from their default, but if you need to manually enter DNS settings, this is where it's done.

Advanced connection options



Many ISPs do not require a terminal window, domain name server information (DNS), or IP address information, because they assign this information automatically upon connection.

However, if you need to enter these settings, they're available on the TCP/IP and Name Server tabs of the Advanced Settings. Options include using a specific IP address, using SLIP, enabling/disabling software

compression, enabling/disabling IP header compression, and manually entering DNS and WINS server information.

Tap **OK**
Tap **Next**

Enter the phone number you wish to dial. Leave the "Country code:" and "Area code:" fields blank. Enter the entire access number in the "Phone number:" field. ***When connecting to an existing ISP it is always recommended to use 10-digit dialing from a mobile phone & to place all 10 digits of the phone number in the Phone Number field.***

Country code: Leave Blank
Area code: Leave Blank
Phone Number: "#777" or "Your ISP's 10 digit access number"

Enter the access phone number and Tap **Next**

QNC

Settings 10:12

Verizon

Country code:

Area code:

Phone number:

Cancel Back Next

Dial-Up (Existing ISP)

Settings 10:13

Verizon

Country code:

Area code:

Phone number:

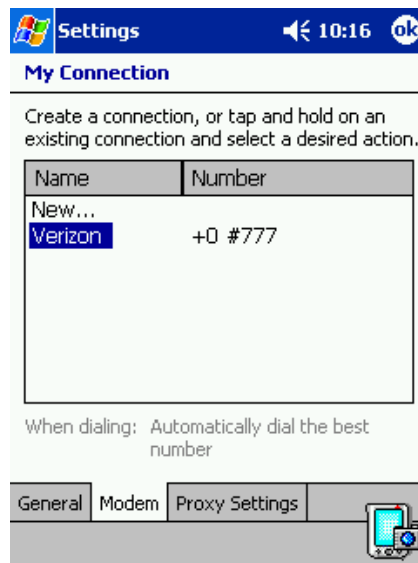
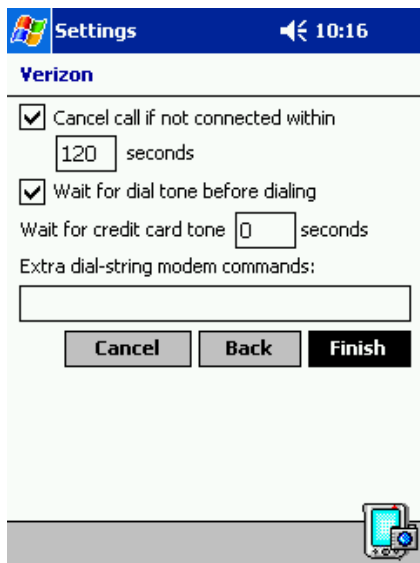
Cancel Back Next

On the next screen you can specify dialing options for this connection, including calling card and credit card numbers. You enter those numbers under **Extra dial-string modem commands**. If you have no extra settings to enter, tap **Finish**. You're done creating a new connection!

Check "Cancel call if not connected within [120] seconds"
Check "Wait for dial tone before dialing"

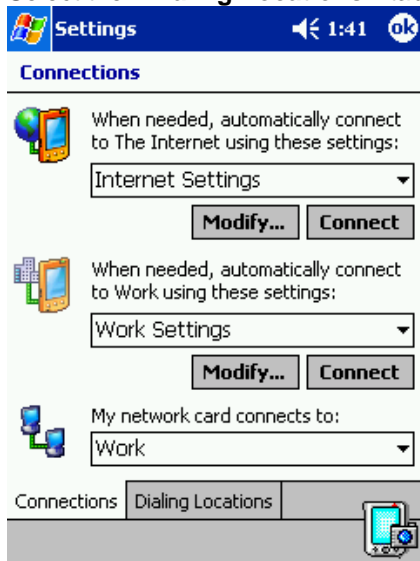
***If you use a Qualcomm, Kyocera or Audiovox phone, Place the command "&C2" In the box under "Extra dial-string modem commands."*

Tap **Finish**, then Tap **OK**



Configure a Mobile location

While in the "Connections" screen
Select the "Dialing Locations" tab (bottom), and Select "New"



Name the location: **"Mobile"**, Tap **OK**



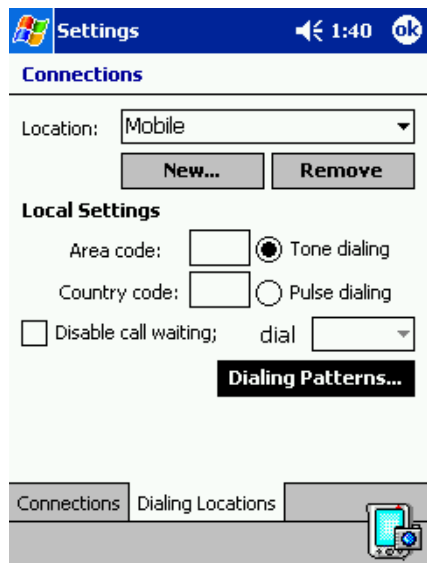
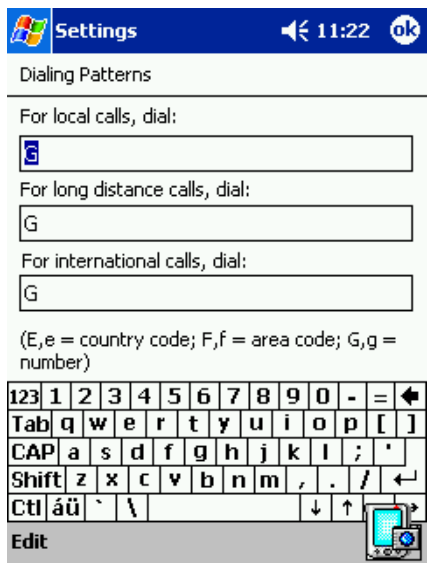
Area code: blank
 Select **Tone Dialing**
 Select **“Dialing Patterns...”**



Dialing Patterns...

For local calls, dial: [G]
 For long distance calls, dial: [G]
 For international calls, dial: [G]
 E = (country code) (011), F = (area code), G = (phone number)

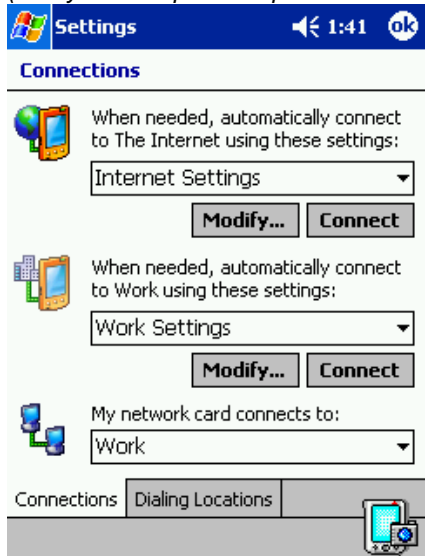
Tap **OK** and select the **“Connections”** tab at the bottom of the screen



Ready To Connect

Press **“Connect”** to initiate the connection

(Verify that the phone is powered on and the data cable is securely connected to the phone and PDA)

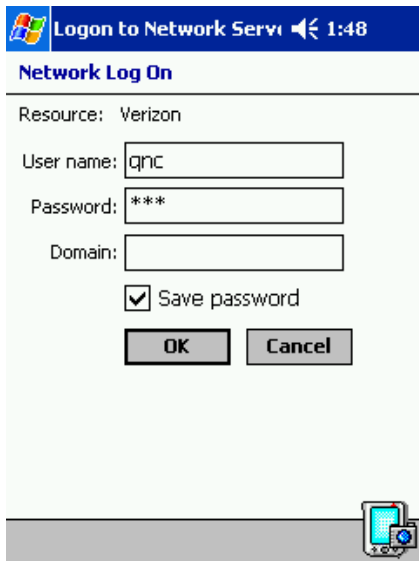


Enter **user name:** **qnc** or Your existing **ISP's username**

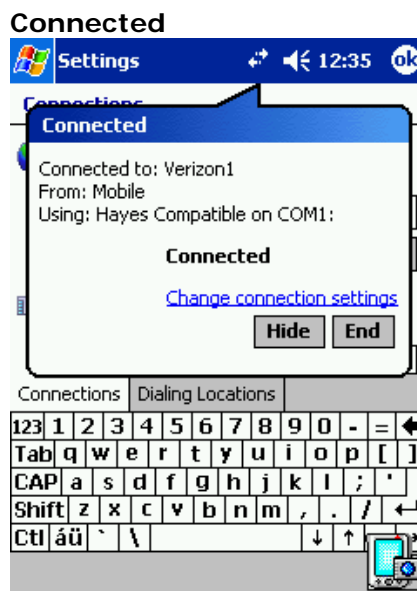
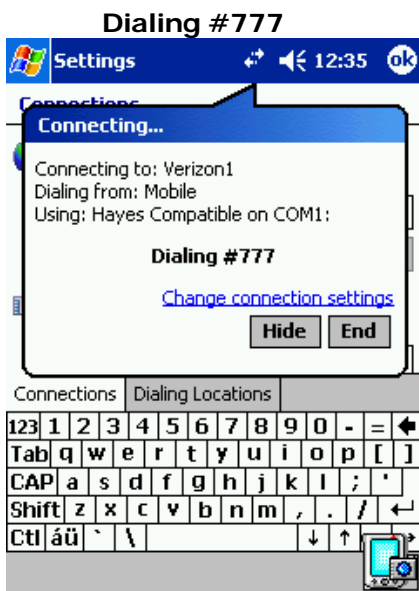
Enter **password:** **qnc** or Your existing **ISP's password**

(If you want to avoid entering your password each time, check the Save Password box)

Press **“OK”**



Wait a few seconds for it to dial and in 6-10 seconds you're on the Net!

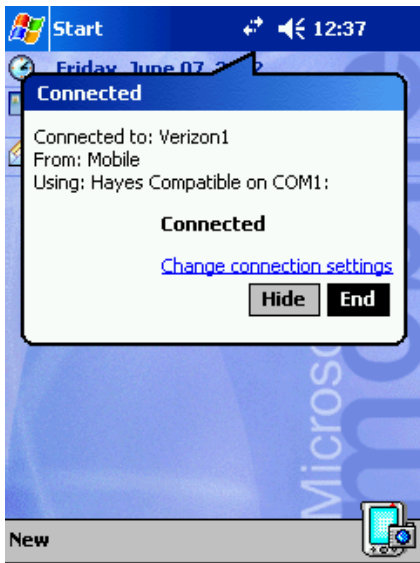


To Disconnect

The **Connection Icon**  is displayed on the Menu Bar when a Network Connection is in place.

Tap the **Connection icon**

Tap **END to Disconnect** the Network Connection



Setting The Default Connection

If there is more than one connection set up in Internet Setting, set the default connect by pressing the connection name and holding it. This will present several options:

- Delete
- **Always Dial**
- Connect

Select “**Always Dial**” to use this as the default connection (to dial this connection each time an internet connection is required).



Troubleshooting

- If you're still having a problem connecting, remove the selections for the header compression and software compression (under the TCP/IP tab as shown in Figure 2).
- If you're still having a problem connecting, place an &C2 in the "Extra dial-string modem command" box as shown in Figure 4).
- If you're still having a problem, please contact your ISP to confirm your settings. They may be using authentication protocols that are incompatible with the Pocket PC.

Conclusion

Now that you know how to connect, you can use e-mail and surf the Web with Inbox and Pocket Internet Explorer.