

# Verizon Wireless

## Mobile Office User Guides

### For Windows™ CE

#### Setting up Windows CE for a Quick 2 Net<sup>SM</sup> Connection

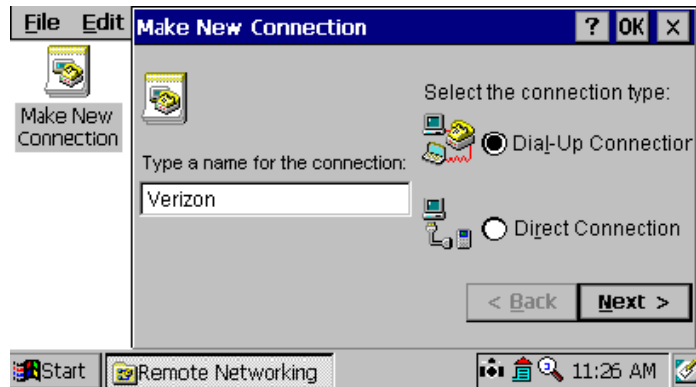
**Before you start:** Many handheld or palm devices using Windows CE do not have a 9-pin serial port. If your Windows CE device does not have a 9-pin serial port, you can use your synchronization cable or cradle as a serial port by purchasing a DB9-M to DB9-M null modem. This part may also be found at a local electronics outlet. The Mobile Office kit includes this adapter.

**Step 1:** Connect your sync cable, null modem adapter and serial cable.

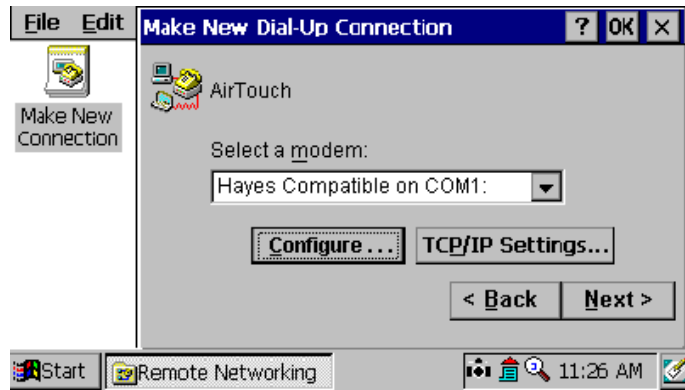
**Step 2:** Tap on Start, Programs, Communications, then Remote Networking. Now double-tap "Make New Connection."



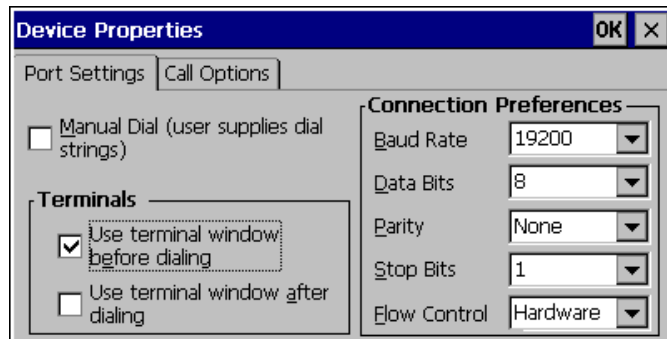
**Step 3:** Type "Verizon" for the name, Choose "Dial-Up Connection" then tap Next.



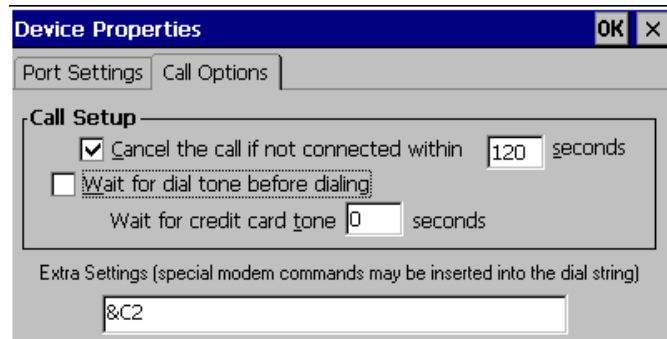
**Step 4:** Select the "Hayes Compatible on Com1:" modem then tap Configure.



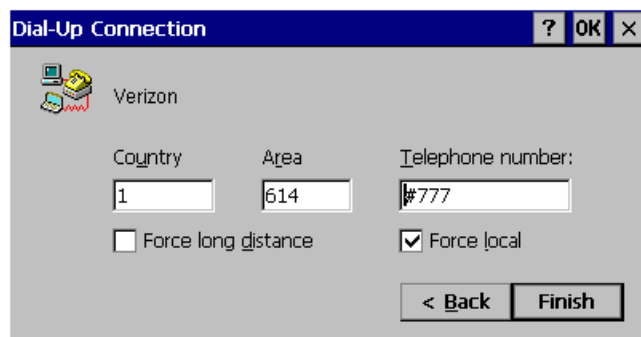
**Step 5:** Check the box labeled "Use terminal window before dialing"



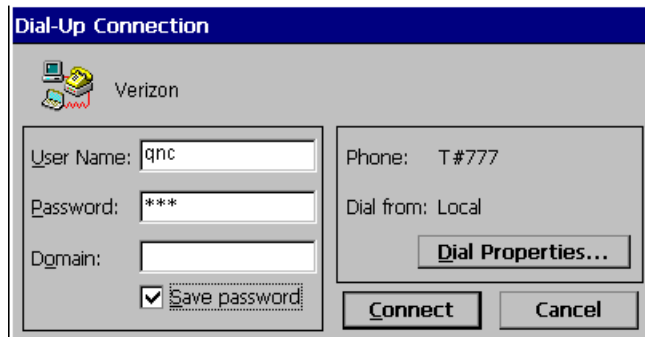
**Step 6:** If you are using the Qualcomm QCP-860 tap the Call Options tab and in the Extra Settings area, enter "&C2" (without quotes) then click "OK." (For all other phones skip this step)



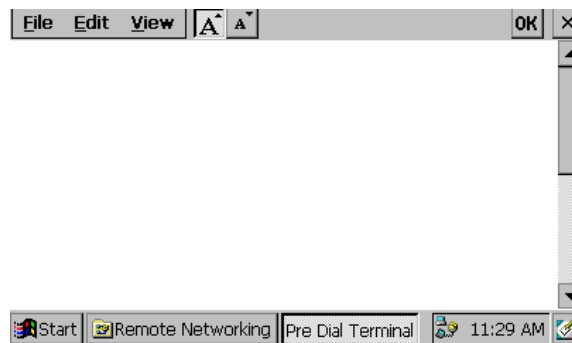
**Step 7:** Enter "#777" as the Telephone Number and check the box labeled "Force Local" than tap Finish.



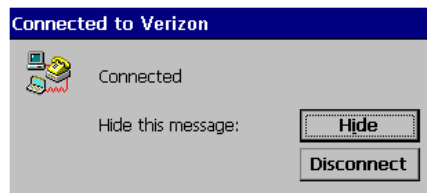
**Step 8:** Double-tap on your newly created Verizon icon. Enter "qnc" for the User Name and "qnc" for the password, in lower case. Leave the Domain area blank and then tap Connect.




**Step 9:** After a few seconds a blank terminal window will appear. After it appears, tap OK.



You will see the following as soon as you are connected:



**Step 10:** Double tap Internet Explorer or your favorite Windows CE browser to begin browsing the Internet.

**Step 11:** When finished, you can disconnect by double tapping on the  icon in your task tray and clicking on disconnect.

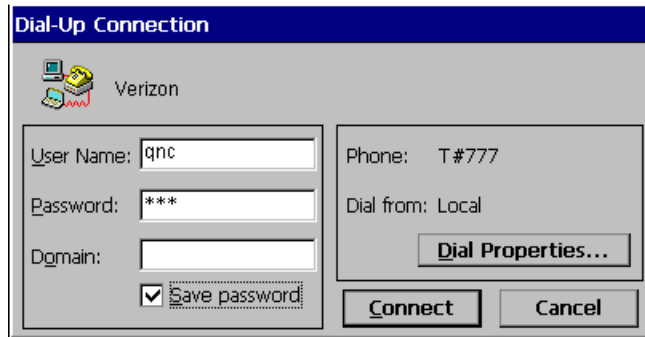
## Using Windows CE for a Quick 2 Net<sup>sm</sup> Connection

Once you have completed the setup instructions above:

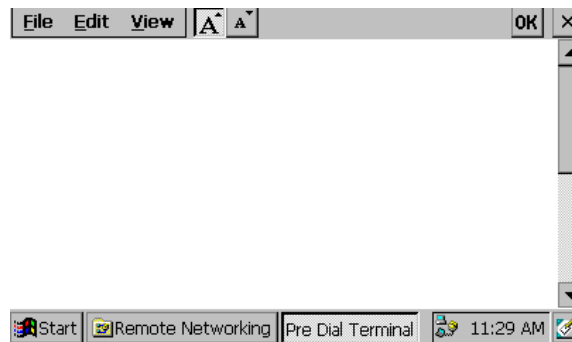
**Step 1:** To connect, go to Start, Programs, Communications, Remote Networking, Double tap Verizon



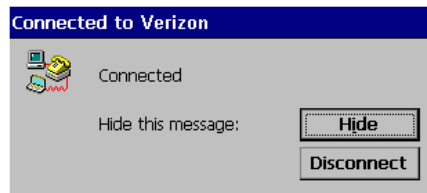
**Step 2:** If you failed to save the password, enter "qnc" for the user name and "qnc" for the password, in lower case. Tap Connect.



**Step 3:** Tap OK when you get the blank terminal window.



You will see the following as soon as you are connected:



**Step 4:** Double tap Internet Explorer or your favorite Windows CE browser to begin browsing the Internet.

**Step 5:** You can disconnect by double tapping on the  icon in your task tray and clicking on disconnect.