

Verizon Wireless

Mobile Office User Guides

For Windows™ NT Support Documents

Setting Your Phone Up as a Modem in Windows NT	2 - 6
Setting Up Windows NT for Verizon Quick 2 Net SM	7 - 8
Setting Up Existing RAS Connections for Mobile Office	9 - 10

Setting up Windows NT & Verizon Quick 2 NetSM

Installing the Phone as a Modem:

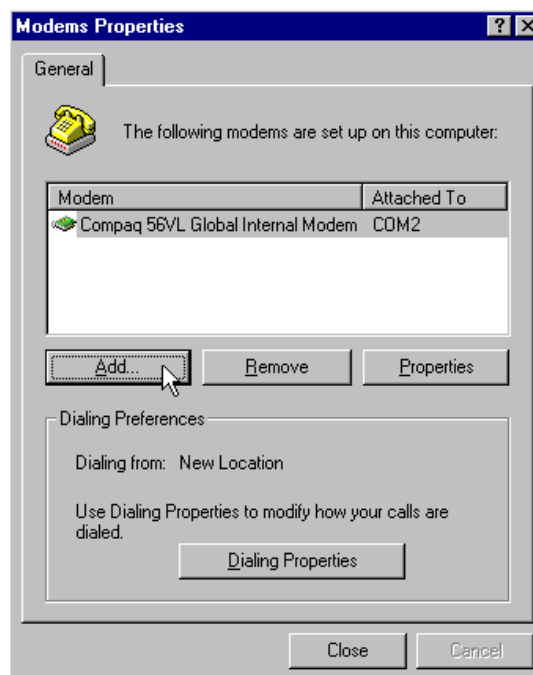
Step 1: Download our modem driver to use when following these instructions [Download Driver](#)

(If you use the Standard 19200 bps modem driver instead, and you are also using a Qualcomm QCP-860 phone, you will need to add &C2 in the extra settings for the modem. Our driver includes this setting for the Qualcomm phone. Our driver also allows Dial Up Networking to report your connect speed correctly.)

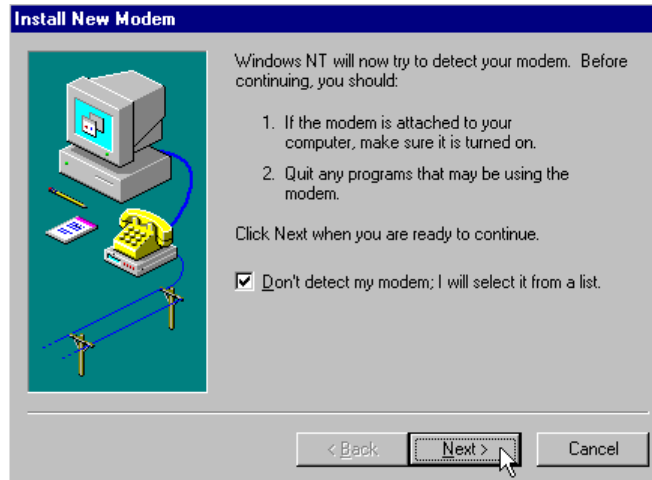
Step 2: Double-click "Modems" in Control Panel. You can access Control Panel by going to Start, then Settings and then choosing Control Panel.



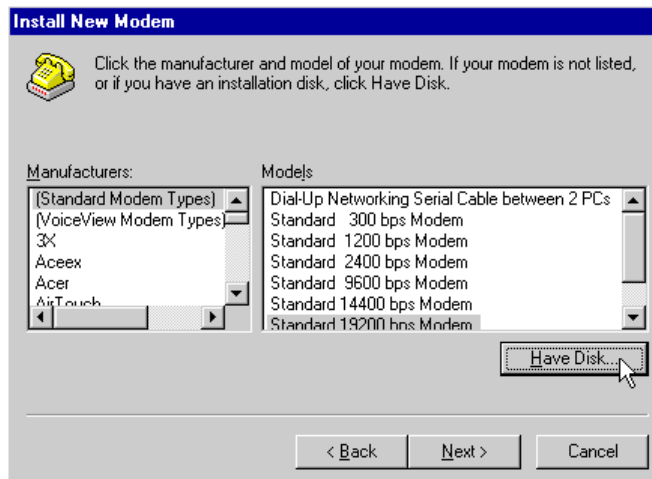
Step 3: Click "Add."



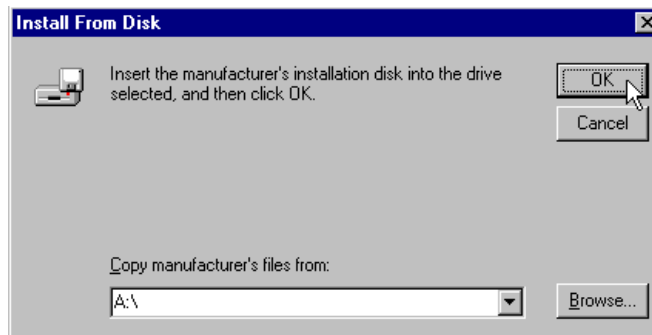
Step 4: Check the box labeled "Don't detect my modem; I will select it from a list." Then click "Next."



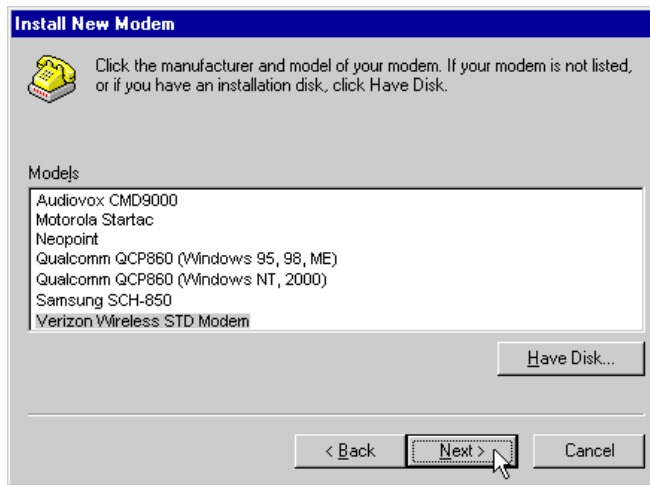
Step 5: Click "Have Disk."



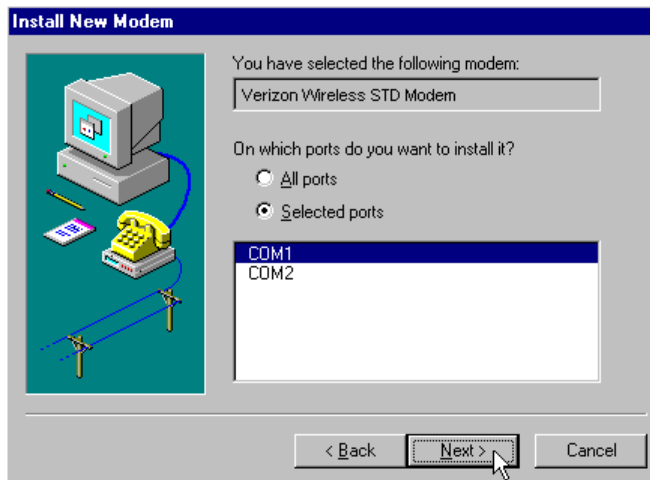
Step 6: If you have a floppy disk with the driver on it, click "OK." Or you can browse to the directory where you downloaded it and then click "OK."



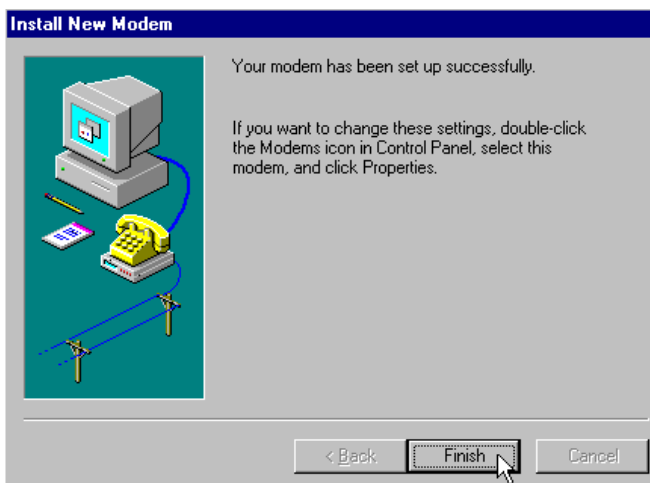
Step 7: Select the appropriate choice for your phone model or if it is not listed select "Verizon Wireless STD Modem". Click "Next."



Step 8: Select the COM port associated with your computer's serial port (usually COM1) then click "Next."



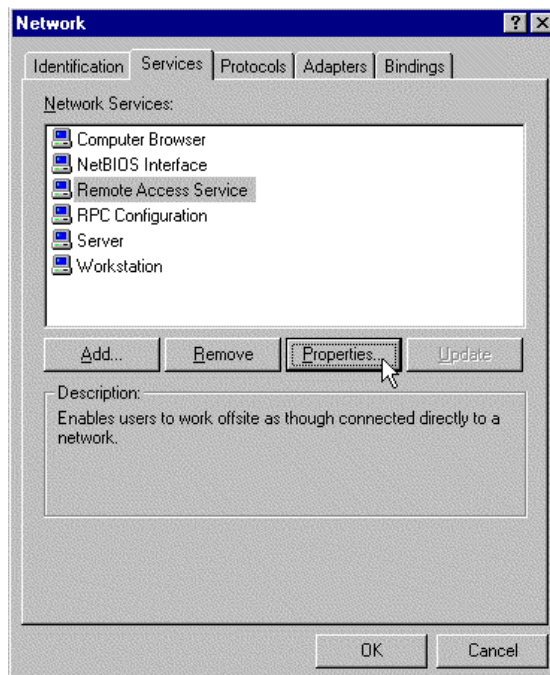
Step 9: Click "Finish."



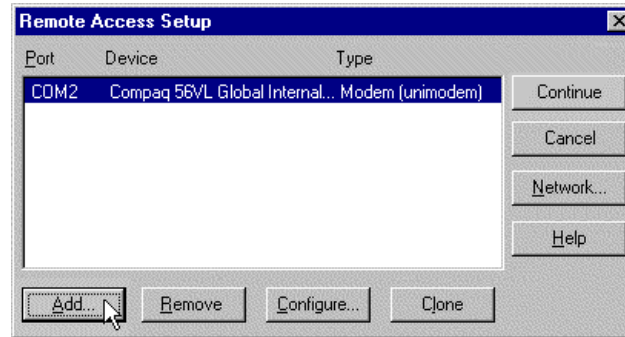
Step 10: To tell Windows to make the modem available for Dial Up Networking connections, in Control Panel, double-click on "Network"



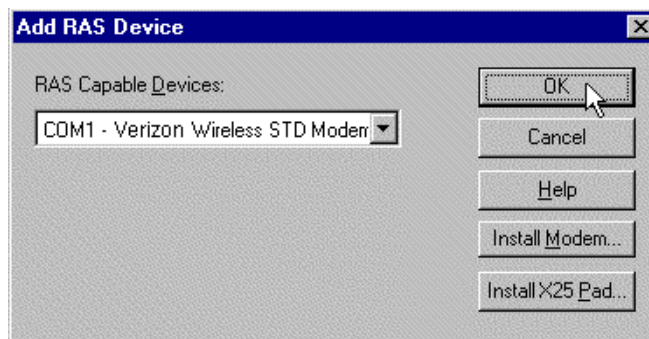
Step 11: On the Services tab, select "Remote Access Service", then click "Properties."



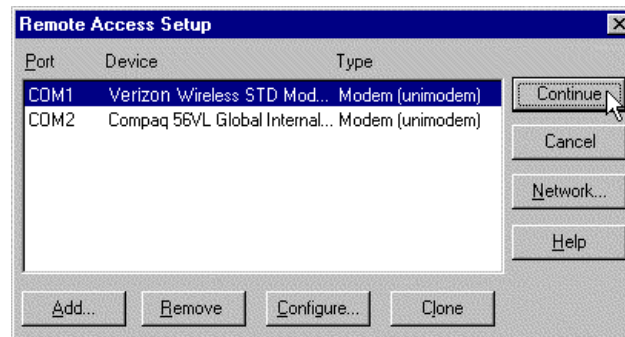
Step 12: Click "Add"



Step 13: Select your model cell phone, the Verizon STD Wireless Modem, or Standard 19200 bps modem (depending on which driver you used), then click OK.



Step 14: Click "Continue."



Step 15: Close Network Properties and your system will prompt you to reboot. Allow the system to restart.

Congratulations! Your modem is successfully installed. Next you will want to [Set Up Your Quick 2 Netsm Connection or Set Up Your Existing Dial Up Connections, both located in Windows 95/98 User Guides](#)

Other Items of Possible Interest:

If an AOL subscriber see

[Setting Up and Using AOL 5.0/4.0, located in Windows 95/98 User Guides](#)

[Faxing With Your Digital Data Capable Phone – Setup, located in Windows 95/98 User Guides](#)

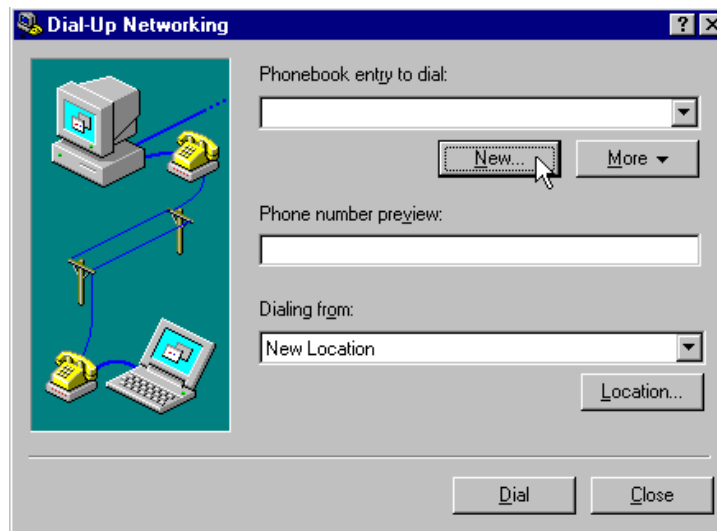
Setting up Windows NT for Verizon Quick 2 Net Connection

Before you begin: If you have not done so already, see the document [Setting Your Phone Up as a Modem in Windows NT, page 2](#)

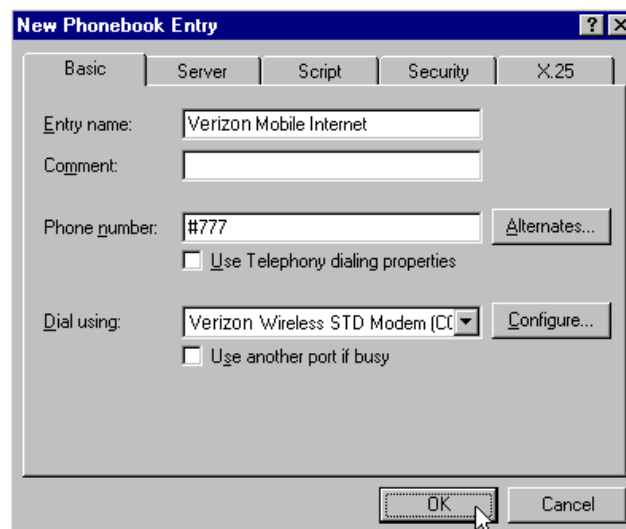
Step 1: Go to Start, Programs, Accessories and click on "Dial-Up Networking."



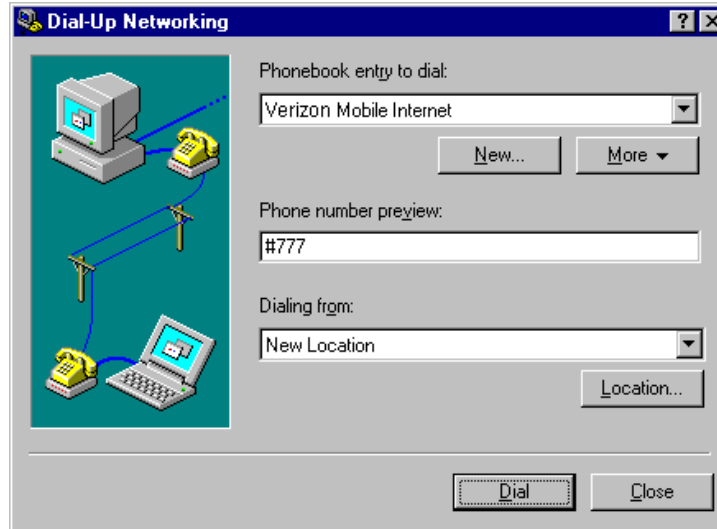
Step 2: Click "New."



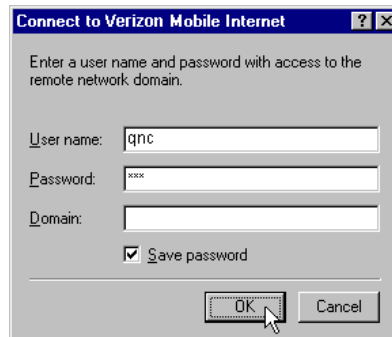
Step 3: Type "Verizon Mobile Internet" for the Entry name, '#777' for the Phone number and under Dial using, select the driver you used when you installed your phone as a modem. (Usually the model of you cell phone, Verizon Wireless STD Modem or Standard 19200 bps Modem.), then click OK.



Step 4: Click "Dial."



Step 5: Enter "qnc" for the User name, "qnc" for the Password (be sure the password is in lower case and Check the box labeled "Save Password." Make sure that your serial cable is attached to your computer and phone, power on the phone and then click "OK."



Congratulations, you have successfully created a Verizon Quick 2 Netsm Connection.

If you want to use Mobile Office for your existing connections, see the document [Setting Up Existing RAS Connections for Mobile Office, page 9](#)

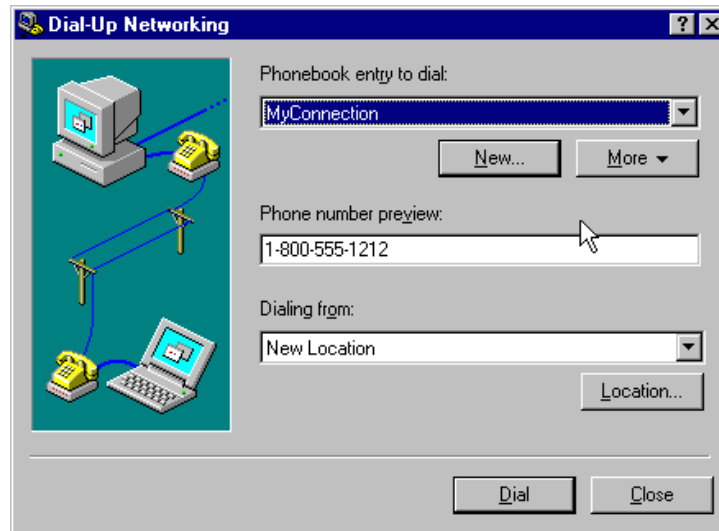
Setting Up Existing Windows NT RAS Connections For Mobile Office

Before you begin: If you have not done so already, see the document [Setting Your Phone Up as a Modem in Windows NT, page 2](#)

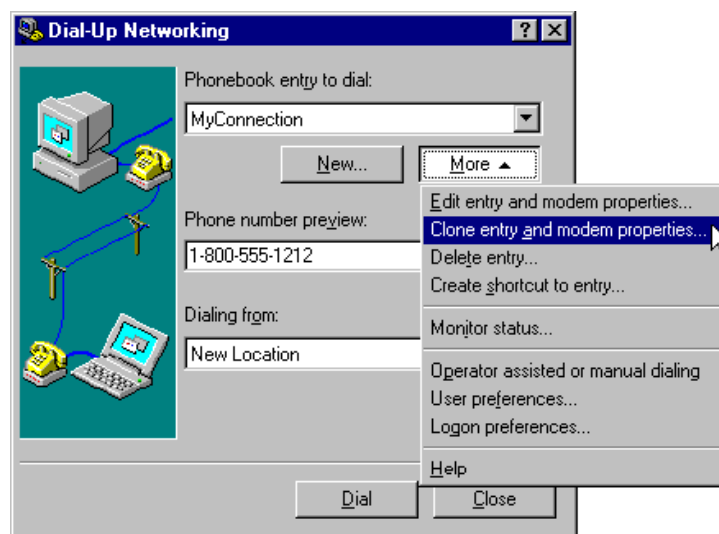
Step 1: Go to Start, Programs, Accessories and click on "Dial-Up Networking."



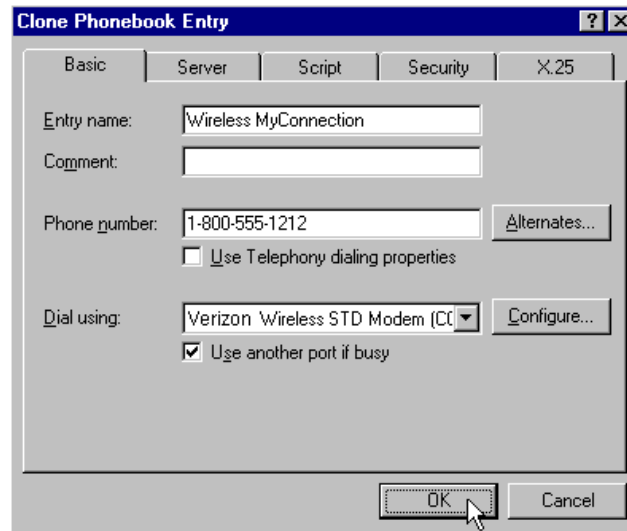
Step 2: Select the connection you want to set up for use with Mobile Office under the Phonebook entry to dial.



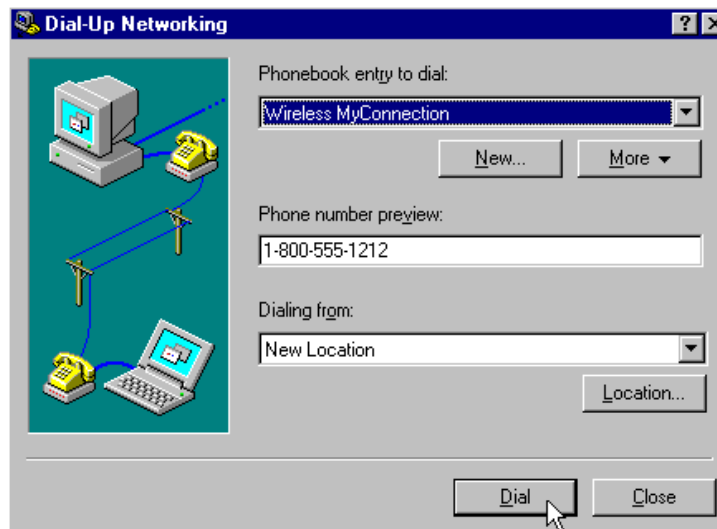
Step 3: Click on "More" then choose "Clone entry and modem properties..."



Step 4: Add the name "Wireless" to the front of the existing name. Under 'Dial using' select your cell phone, Verizon Wireless STD Modem or Standard 19200 bps modem (depending on which driver you used when you installed your cell phone as a modem). Then click "OK."



Step 5: Make sure your cable is attached to your phone and computer, the phone is powered on and then click 'Dial' to connect.



Step 6: Repeat this procedure for any additional connections you wish to use wirelessly.

If you want to use Mobile Office to connect to the Internet quickly, see the document [Setting up Windows NT & Verizon Quick 2 Netsm Connection, page 7](#)