



Software update for your LG G PAD 8.3 LTE.

Software Version: VK81022A

Verizon Wireless is pleased to announce an operating system update to Android 4.4.2 (KitKat) that will improve the performance of your LG G Pad 8.3 LTE tablet.



LG G Pad 8.3 LTE

KIT KAT ENHANCEMENTS:

- Battery icon color changes from blue to white
- Immersive Mode automatically provides full screen viewing for any application or game
- Print services for HP ePrint, Google Cloud Print and other printers in the Google Play Store
- Multi-User Mode allows you to create user accounts and permissions for others to set up and customize their apps & wallpaper
- Change in Accessibility Settings

LG ENHANCEMENTS:

- Added the Knock Code Feature

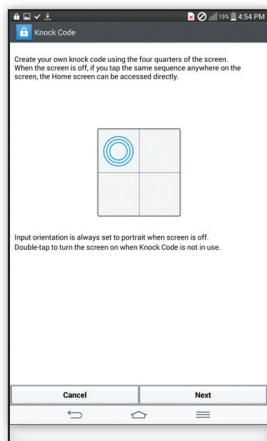
For step-by-step instructions on how to perform the download, please visit www.vzw.com/lggpadsupport.

1 2

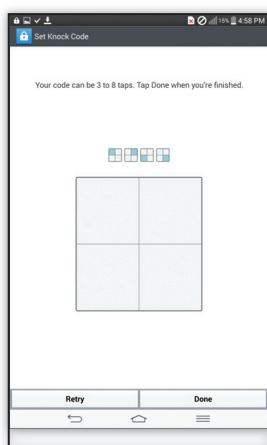
LG G PAD 8.3 LTE

KNOCK CODE SETTING

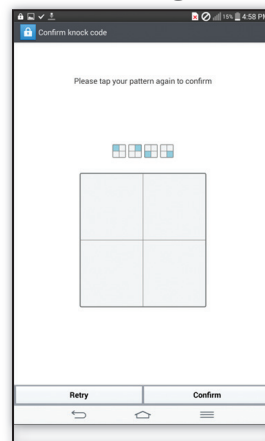
1. Introduction



2. Entering Knock Code

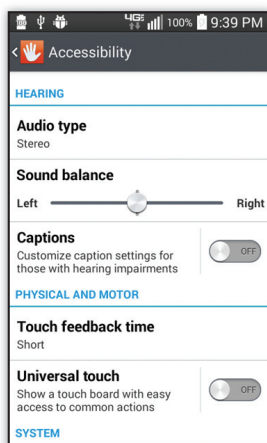
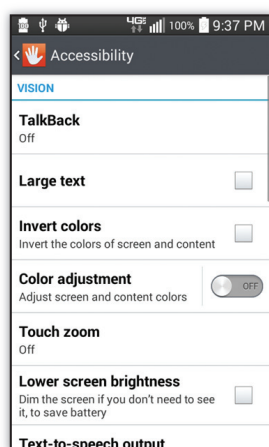


3. Confirming Knock Code



- Keeps your device data safe and secure
- Create your own Knock code use the four quarters of the screen
- Tap your pattern to confirm Knock code

ACCESSIBILITY SETTINGS



- Added 'Color adjustment'
- Added 'Touch zoom'
- Changed the label from 'Shades' to 'Lower screen brightness'
- Changed the from 'Mono audio' to 'Audio type' & 'Sound balance'
- Added 'Captions'
- Changed the label from 'Touch & hold delay' to 'Touch feedback time'

THE FOLLOWING ISSUES HAVE BEEN ADDRESSED:

- "Cannot connect to server" error message no longer appears when adding an Exchange account supported by auto-discovery
- QPair application provider permissions are now accessible
- SIM card works properly when connected/disconnected to network or Wi-Fi
- Fast charging now supported when device is charge by Verizon branded high-speed charger (5V/2.1A)
- Sound is no longer muffled when playing multimedia in low volume
- Music App now plays WMA files containing Album ART data
- Falls back to IPv4 connection when IPv6 connection is unavailable to DM server

For step-by-step instructions on how to perform the download, please visit www.vzw.com/lggpadsupport.