

Intuition by LG Software Update



Overview

To help you with the system update for your Intuition by LG this page contains the following information:

- System Update Instructions for Windows Vista users
- System Update Instructions for Windows 7 users
- System Update Instructions for Windows XP users
- System Update Instructions for Windows 8 users

Note: The size for this software upgrade is 204.5 MB.

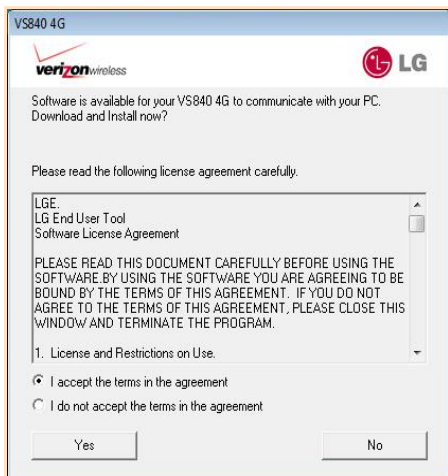
Upgrade Assistant Tool instructions for Windows Vista users

1. Connect the computer to the Intuition by LG via USB Cable and click **Run VZW Software upgrade assistant.exe**

If you don't take any action in 30 seconds the device will return to user setting mode. You can continue with the upgrade when you plug the device in at a later point in time.



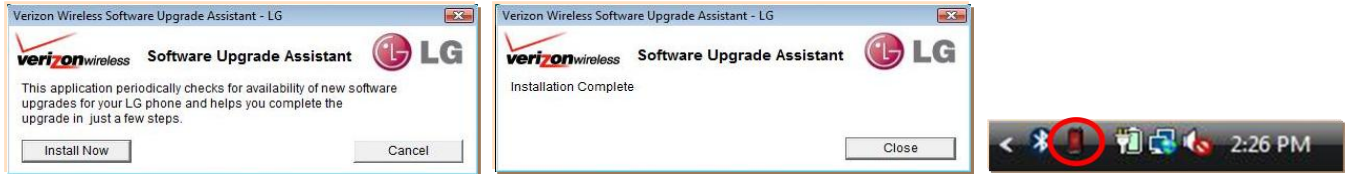
2. Click on the **I accept the terms in the license agreement** button and click **Yes** to install the USB driver and the Upgrade Assistant Tool.



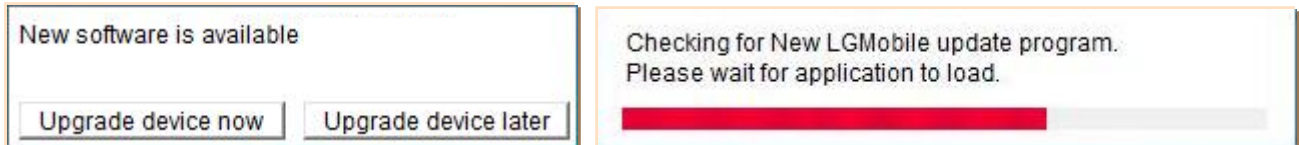
Intuition by LG Software Update



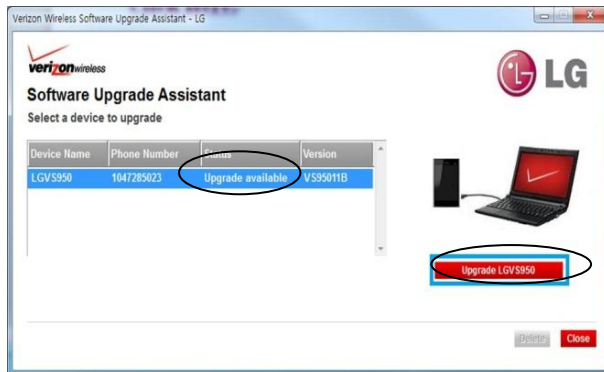
- Click **Install Now** to install Software Upgrade Assistant, click **Close** when complete. The below icon will appear after the Upgrade Assistant has been installed successfully.



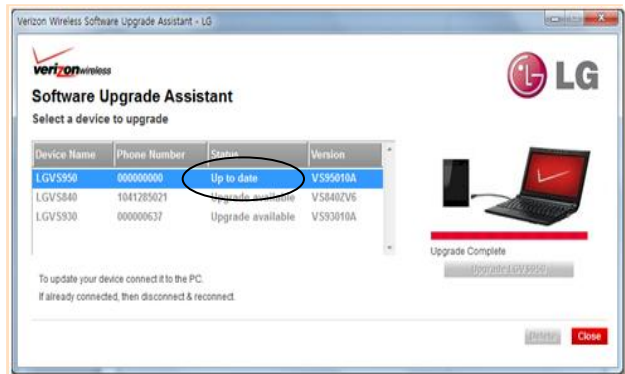
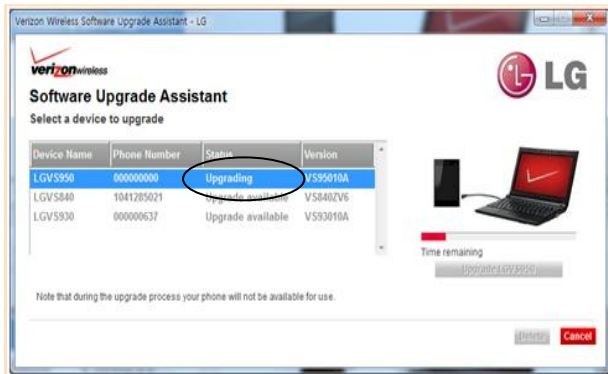
- When new software is available you will be notified with the below popup. Click **“Upgrade device now”** to launch Software Upgrade Assistant.



- The status on the Upgrade Assistant will show **Upgrade Available**. Click Upgrade LGVS950 and this will begin the download and update the status to **S/W Downloading**.



- Once the software download is complete, the upgrade will automatically start and the status will update the status to **Upgrading**, once complete the status will update to **Up to date**.



Intuition by LG Software Update



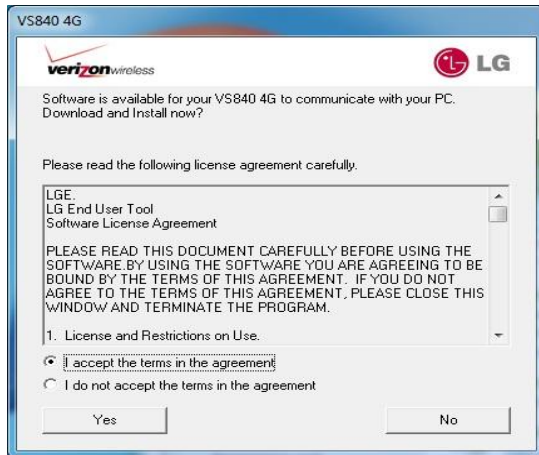
Upgrade Assistant Tool instructions for Windows 7 Users

1. Connect the computer to the Intuition by LG via USB Cable and click **Run VZW Software upgrade assistant.exe**

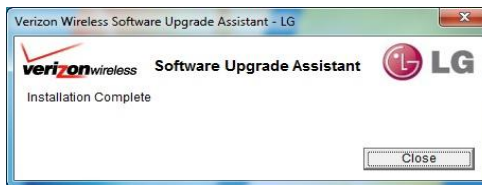
If you don't take any action in 30 seconds the device will return to user setting mode. You can continue with the upgrade when you plug the device in at a later point in time.



2. Click on the **I accept the terms in the license agreement** button and click **Yes** to install the USB driver and the Upgrade Assistant Tool.



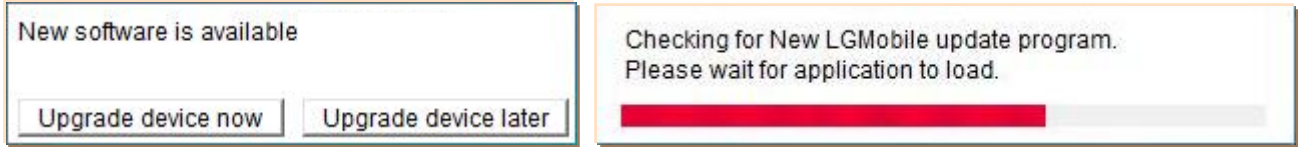
3. Click **Install Now** to install Software Upgrade Assistant, click **Close** when complete. The below icon will appear after the Upgrade Assistant has been installed successfully.



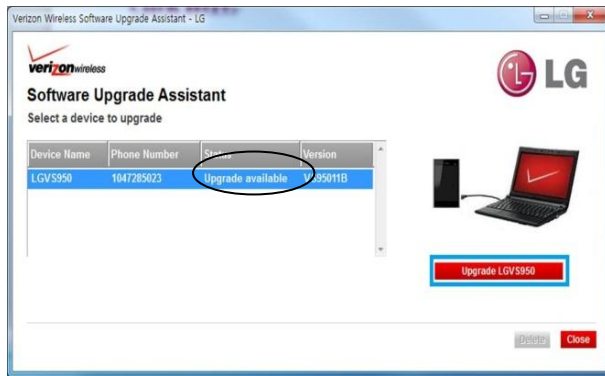
Intuition by LG Software Update



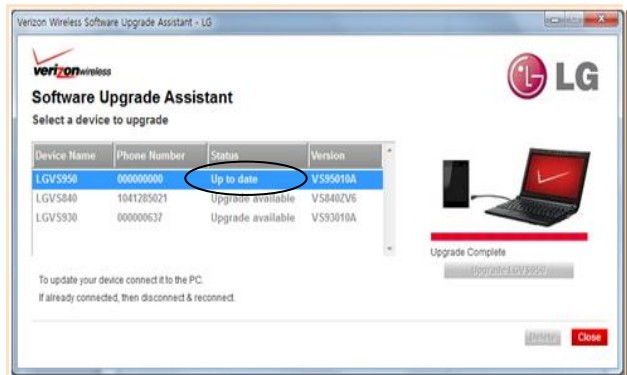
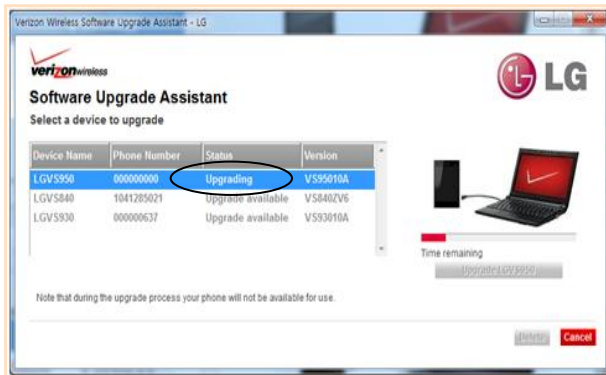
- 4. When new software is available you will be notified with the below popup. Click **“Upgrade device now”** to launch Software Upgrade Assistant.



- 5. The status on the Upgrade Assistant will show **Upgrade Available**. Click Upgrade LGVS950 and this will begin the download and update the status to **S/W Downloading**.



- 6. Once the software download is complete, the upgrade will automatically start and the status will update the status to **Upgrading**, once complete the status will update to **Up to date**.



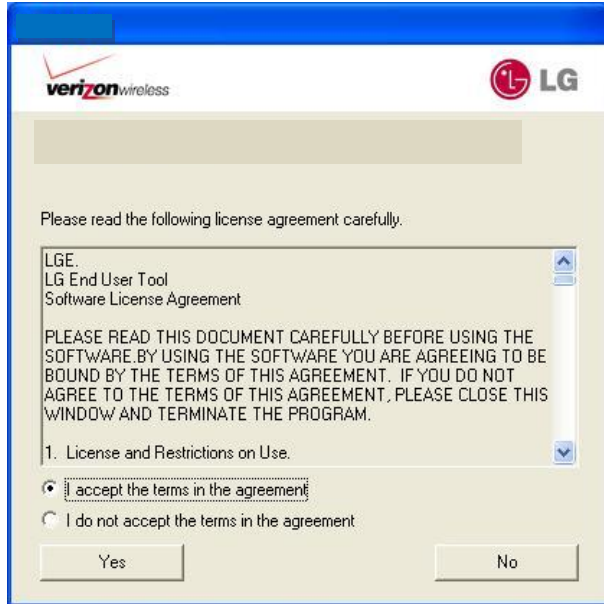
Intuition by LG Software Update



Upgrade Assistant Tool instructions for Windows XP Users

1. Connect the computer to the Intuition by LG via USB Cable, Click on the **I accept the terms in the license agreement** button and click **Yes** to install the USB driver and the Upgrade Assistant Tool.

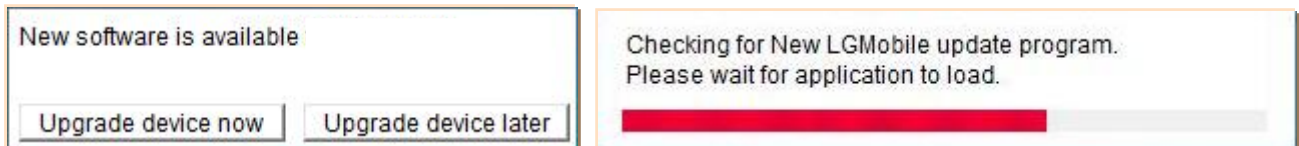
If you don't take any action in 30 seconds the device will return to user setting mode. You can continue with the upgrade when you plug the device in at a later point in time.



2. Click **Install Now** to install Software Upgrade Assistant, click **Close** when complete. The below icon will appear after the Upgrade Assistant has been installed successfully.



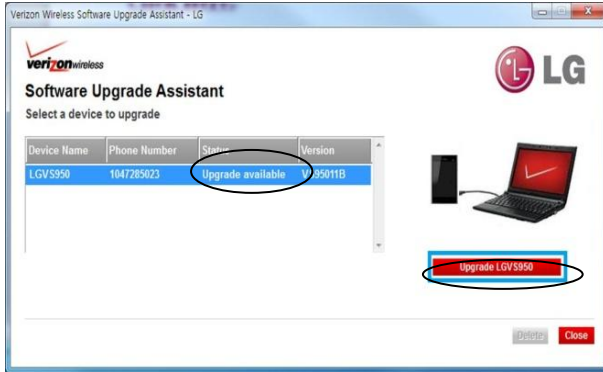
3. When new software is available you will be notified with the below popup. Click **“Upgrade device now”** to launch Software Upgrade Assistant.



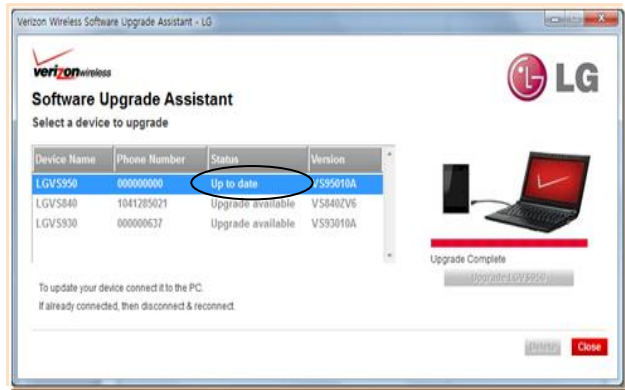
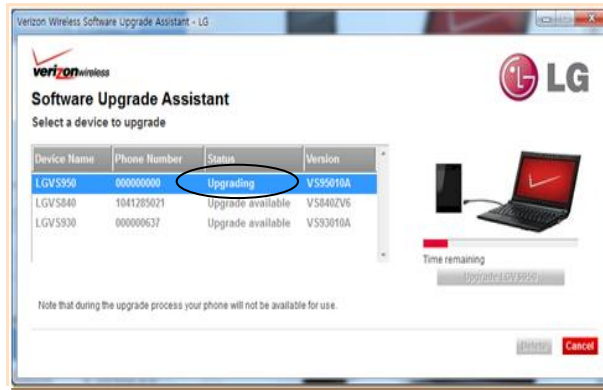
Intuition by LG Software Update



- 4. The status on the Upgrade Assistant will show **Upgrade Available**. Click Upgrade LGVS950 and this will begin the download and update the status to **SW Downloading**.

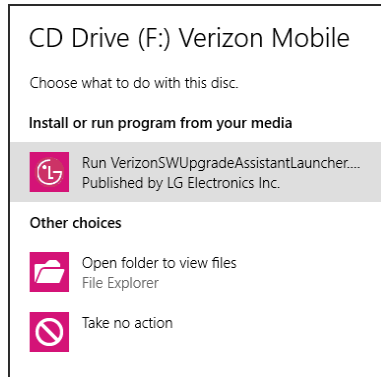
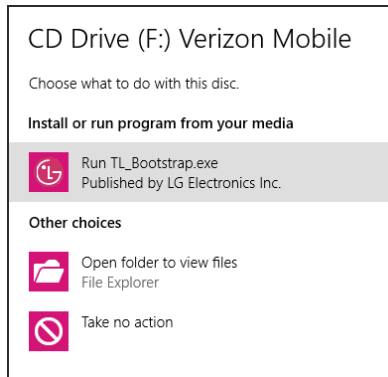


- 5. Once the software download is complete, the upgrade will automatically start and the status will update the status to **Upgrading**, once complete the status will update to **Up to date**.



Upgrade Assistant Tool instructions for Windows 8 Users

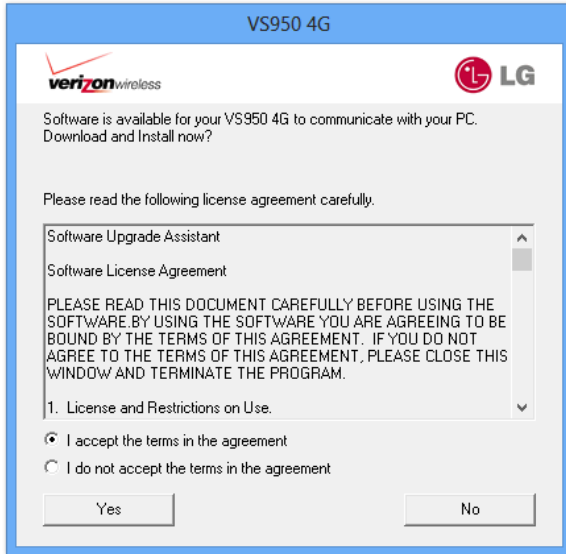
- 1. Connect the computer to the Intuition by LG via USB Cable and click **Run TL_Bootstrap.exe** or **Run VZW Software upgrade assistant.exe** (It depends on your phone's current version) the computer to the Intuition by LG via USB Cable, Click on the **I accept the terms in the license agreement** button and click **Yes** to install the USB driver and the Upgrade Assistant Tool. If you don't take any action in 30 seconds the device will return to user setting mode. You can continue with the upgrade when you plug the device in at a later point in time .



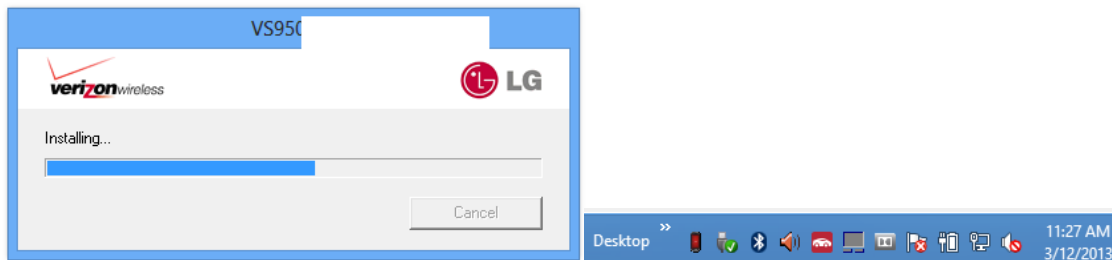
Intuition by LG Software Update



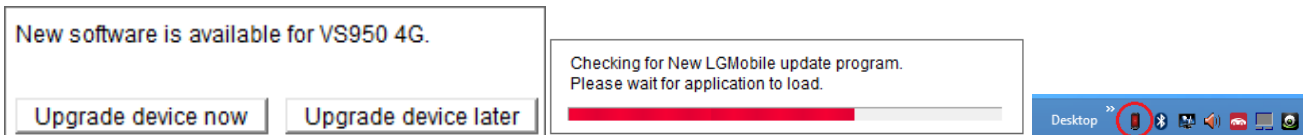
- 2. Click on the **I accept the terms in the agreement** button and click **Yes** to install the USB driver and the Upgrade Assistant Tool.



- 3. The Software Upgrade Assistant is installed and will close automatically. The below icon will appear after the Upgrade Assistant has been installed successfully.



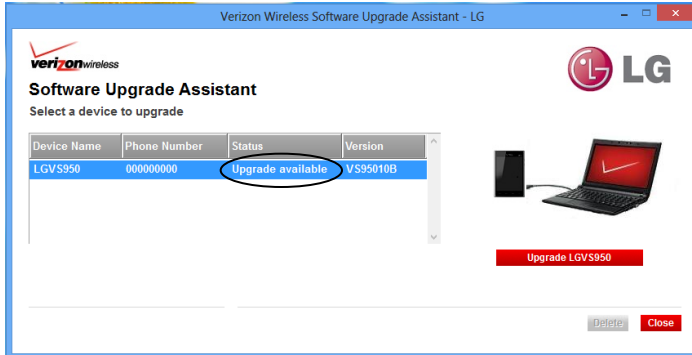
- 4. When new software is available you will be notified with the below popup. Click **“Upgrade device now”** to launch Software Upgrade Assistant. If the first box does not appear, you can upgrade manually. **Double Click “Upgrade Assistant Tool” icon** on your windows system tray to launch Software Upgrade Assistant.



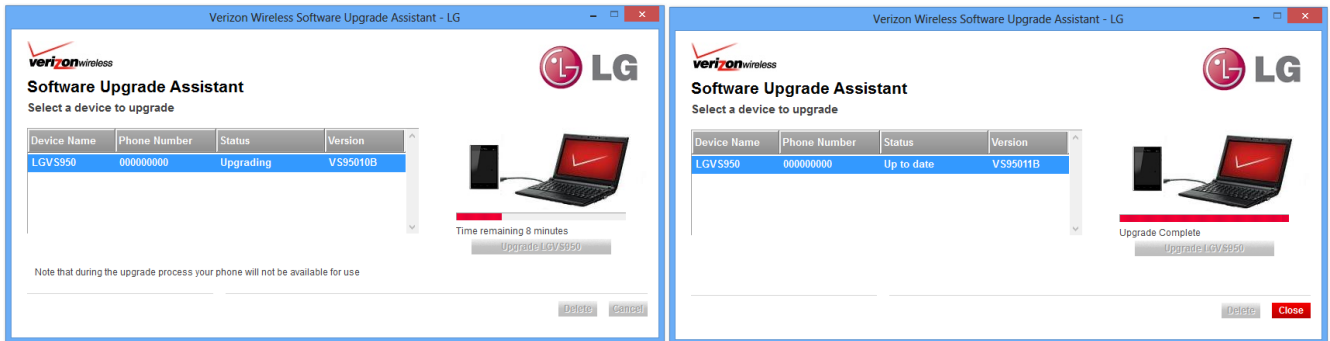
Intuition by LG Software Update



- The status on the Upgrade Assistant will show **Upgrade Available**. Click Upgrade LGVS950 and this will begin the download and update the status to **S/W Downloading**.



- Once the software download is complete, the upgrade will automatically start and the status will update the status to **Upgrading**, once complete the status will update to **Up to date**. **Note: Do not disconnect USB Cable during the upgrade**



If the system update fails to install, you will get an error screen. However, this only means the software did not install properly. Power the device off and back on and the original software and will prompt you once again to install the system update. If the update fails again, please visit www.verizonwireless.com/contactus .