

Meet your device.

verizon[✓]

Para la versión en español, visite
verizonwireless.com/support

SAMSUNG Galaxy View

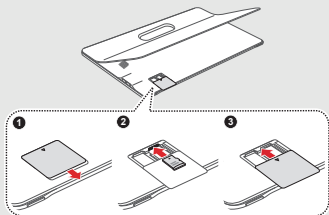
Setting up your Galaxy View

Your Galaxy View comes with the SIM card pre-installed.

Optional: Insert the microSD card

Your Galaxy View supports a removable microSD™ or microSDHC™ card (sold separately) for storage of music, pictures and other files.

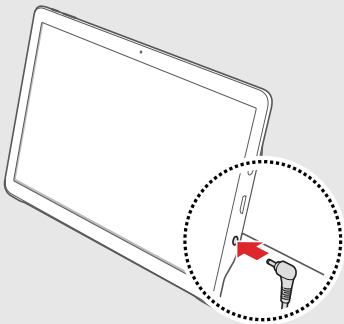
1. Locate the microSD card slot on the back of the Galaxy View under the stand. Slide the card slot cover toward the edge of the Galaxy View to open it.
2. Insert the microSD card with the gold contacts facing down and carefully slide it in to the microSD card slot (as shown) until it clicks into place.
3. Close the microSD card slot cover.



Charge your Galaxy View

Before turning on your Galaxy View, charge it fully.

Your Galaxy View comes with a charging cable. Plug the cable into the charger port on your Galaxy View and plug the charger into an electrical outlet.



WARNING! Please use only a Samsung approved charging accessory to charge your device. Improper handling of the charging port, as well as the use of an incompatible charger, may cause damage to your device and void the warranty.

About your Galaxy View



Not all features, apps or services may be available with your plan, device operating system and software version. Please contact your wireless service provider for more information.

NOTE: Devices and software are constantly evolving – the screen images and icons you see here are for reference only.



microSD and SIM Card Slot

Stand

Using your Galaxy View

Turning your Galaxy View on/off

To turn your Galaxy View on, press and hold the **Power/Lock** button. Press the **Power/Lock** button again to turn it off.

Locking/unlocking the screen

To turn on your screen, press the **Power/Lock** button. Then swipe the screen in any direction to unlock it.

To turn off your screen and prevent accidental key presses, press the **Power/Lock** button.

Activating your Galaxy View

Activate your Galaxy View to use the Internet on Verizon's super-fast 4G LTE network.

1. Make sure your SIM card is inserted and turn on your Galaxy View.
2. Follow the onscreen instructions in the Setup Wizard.

NOTE: Subject to specific terms of use. For coverage details, visit verizonwireless.com/coveragelocator.

Learning more



The Help app gives you tips, videos and other information on how to use your Galaxy View, including:



Getting Apps



Taking Photos



Accessibility Settings



Visit: **[verizonwireless.com/support](https://www.verizonwireless.com/support)**.



Download a User Guide from **[verizonwireless.com/support](https://www.verizonwireless.com/support)** or call **(888) 987-HELP (4357)** to order a copy.

Managing your account



My Verizon Mobile app

Manage your account, track your usage, edit account information, pay your bill and more.



International travel

Visit verizonwireless.com/international for features and rates when traveling outside the US.



Customer service

Call **(800) 922-0204**

Twitter **@VZWSupport**

Additional information

Your wireless device and third-party services

Verizon Wireless is the mobile carrier associated with this wireless device, but many services and features offered through this are provided by or in conjunction with third parties. Verizon Wireless is not responsible for your use of this device or any non-Verizon Wireless applications, services and products, including any personal information you choose to use, submit or share with others. Specific third-party terms and conditions, terms of use and privacy policies apply. Please review carefully all applicable terms, conditions and policies prior to using this wireless device and any associated application, product or service.

© 2016 Verizon Wireless. All Rights Reserved. Samsung and Galaxy Tab are both trademarks of Samsung Electronics Co., Ltd. Android, Google, Google Play, and other marks are trademarks of Google Inc. Other company and product names mentioned herein may be trademarks of their respective owners. Screen images simulated. Appearance of device may vary.

