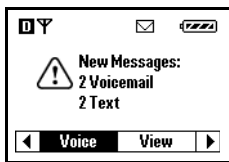


Receiving a Message



When a message is received, your Kyocera smartphone will notify you.

1. Press the shuttle in to highlight and select **View**.
2. The message is displayed.

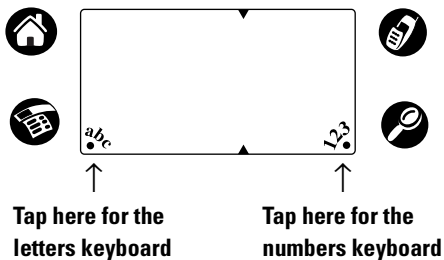
The Options menu offers several choices, including:

- Reply**—Open the flip to continue. The **Outgoing Message** screen is displayed with the address of the sender inserted in the **To:** field. Enter your message text and tap **Send**.
- Erase**—Erases the message.
- Save**—Saves the message to the Saved folder.
- Sender**—Displays sender information if available.
- Forward**—Open the flip to continue. The **Outgoing Message** screen is displayed with the message text in the **Message** field.



Selecting a Text Entry Mode

Text entry with your smartphone is easy. You can rapidly enter text and symbols using the Graffiti writing area. Using your stylus, you can enter the message recipient and the text for your message. To use the keyboards, tap on the areas shown below.



You may also use your stylus to write the message. Use the guide below to form letters and numbers in the Graffiti writing area. Lift the stylus at the end of each stroke.

To enter...	Draw
A	Λ
B	B B
C	C
D	D D
E	E
F	F F
G	G G
H	h
I	I
J	J
K	κ
L	L
M	m m

To enter...	Draw
N	N
O	O O
P	P P
Q	Q
R	R R
S	S
T	T
U	U
V	V V
W	W
X	X X
Y	Y Y
Z	Z

To enter...	Draw
0	0 0
1	1
2	2
3	3
4	4
5	5 5
6	6
7	7
8	8 8
9	9
Space	—
Back Space	←
Next Line	↵

Your Kyocera smartphone stores 20 preformatted short messages. To choose from a list of short messages, tap **Insert** at the **Outgoing Message Screen**. See Sending a Message for more information.

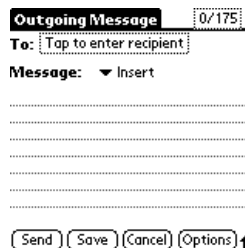
Sending a Message

WITH THE FLIP CLOSED

1. Press the shuttle in to select **Menu, Messages, Send New**.
2. At the prompt, open the flip to continue. Continue with Step 3 below.

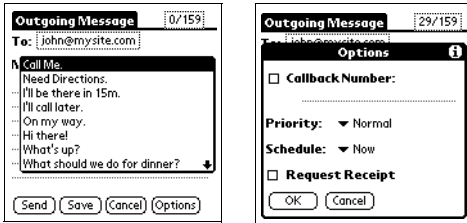
WITH THE FLIP OPEN

1. Using the stylus, scroll down and tap on **Messages**.
2. At the Messages screen, tap **New**.
3. Using the stylus, tap the **Tap to enter recipient** box. Enter the phone number or email address of the person to whom you are sending the message or select **Lookup**. Then select **OK**.



Sending a Preformatted Text Message

To send a preformatted message, tap on **Insert** at the **Outgoing Message** screen. Select your message by tapping on it and then tap **Send**.



Send—Sends the message immediately and saves it in your Text Out-Box.

Save—Saves the message to your Filed folder.

Cancel—Returns to the Out-Box folder.

Options—Allows you to customize your outgoing message.

Callback Number—Adds a callback number to the message.

Priority—Marks the message Normal or Urgent.

Schedule—Schedules delivery of the message.

Request Receipt—Indicates when the message has been received.

Note—Messages can be created several ways. For information on entering text using the Graffiti writing area, consult your smartphone user's guide.

Launching the Internet Browser



1. Open the flip on your smartphone.
2. From the **Launcher** screen, use your stylus to tap **Browser**. Use the scroll bar on the right side of the screen to scroll down. Your phone display will show **Starting Browser Please Wait...**
3. Use your stylus to select the type of browser session you would like from the list displayed. For example, select **Web Sites**. Your smartphone will offer you a selection of sites, such as **Sports, Financial, Travel, or Weather**.
4. Use your stylus to select an option and navigate the Web.

Mobile Web by VZW with MSN is a consumer wireless Internet access offering that gives customers access to rich communication applications, content from over 30 different providers and access to personalized information.

Key Features Include:

- MSN Messenger
- MSN Hotmail
- MSN Calendar
- Alerts

Mobile Messenger: Two-way messaging CDMA phone required to send and receive from handset.

Mobile Web: Airtime charges apply to usage and will deplete minutes allowance. Phone will end data call and session after a minimum of 30 seconds of inactivity.

Airtime charges may apply while navigating through this tutorial on your wireless phone.

Kyocera is a registered trademark of Kyocera Corporation

80-B7721-1, Rev. B